

Treatment of craniocervical instability using a posterior-only approach

Report of 3 cases

RICHARD M. YOUNG, M.D.,¹ JONATHAN H. SHERMAN, M.D.,¹ JOSHUA J. WIND, M.D.,¹
ZACHARY LITVACK, M.D., M.C.R.,¹ AND JOSEPH O'BRIEN, M.D., M.P.H.²

Departments of ¹Neurological Surgery and ²Orthopaedic Surgery, George Washington University Medical Center, Washington, DC

The object of this study was to demonstrate that a posterior-only approach for craniocervical junction pathology is feasible with intraoperative reduction. The authors reviewed 3 cases of craniocervical instability. All patients had craniocervical instability according to radiological imaging and various methods of measurement, with results outside the normal range. Posterior instrumentation aided the intraoperative reduction techniques while maintaining structural integrity and the desired fusion construct. No anterior approach was necessary in any of the patients. Neurological symptoms resolved in two patients and significantly improved in another. Follow-up imaging demonstrated stable constructs.

There are many approaches to anterior cervical pathology at the craniocervical junction. Posterior instrumented reduction and stabilization of the occipitocervical spine can be safely achieved, obviating the need for a transoral approach in the setting of craniocervical junction settling.
(<http://thejns.org/doi/abs/10.3171/2014.3.SPINE13684>)

KEY WORDS • craniocervical instability • basilar invagination •
cranial settling • cervical fusion

PATHOLOGY of the craniocervical junction represents one of the more challenging spinal abnormalities in terms of surgical management. Numerous pathologies can lead to abnormal degeneration of the craniocervical junction, including osteoarthritis, rheumatoid arthritis (RA),^{13,23,25} Down's syndrome,^{25,39} neoplasia,²⁵ trauma,¹ and Chiari malformation.^{13,31} Lesions in this location have been traditionally accessed through an anterior approach to reduce mass effect on the brainstem and high cervical spinal cord. Often a large pannus forms in this location as a result of instability among the osseous and ligamentous elements as well as the joint complexes, leading to an abnormal fibrous complex. Therefore instability can result in an upward translation of the upper cervical elements into the cranial vault and compress the neural elements at the cervicomedullary junction. This anterior pathology can lead to numerous symptoms including cranial neuropathies,^{8,30} bulbar pathology,^{8,10,11} intracranial hypertension,^{8,9} cervical myelopathy,^{25,30} respiratory suppression,²⁵ pain,^{8,10,11} and even hydrocephalus.

Several terms are used to describe degenerative pathology at the craniocervical junction. Benke et al. describe the unique pathologies of "basilar invagination," "basilar impression," and "cranial settling."³ Basilar invagination is a superior protrusion of the dens and loss of skull height due to congenital abnormalities. Basilar impression is attributed to skull base softening, usually caused by an acquired condition such as Paget's disease or osteomalacia. Cranial settling occurs when there is vertical subluxation of the dens caused by the loss of ligamentous support structures commonly seen in rheumatoid³⁰ or psoriatic arthritis.

Multiple radiographic measurements have been developed to quantify the degree of pathology at the craniocervical junction (Table 1).^{6,7,12,27,28,36,37,41} They all seek to address malalignment of the upper cervical spine with regard to the skull base (Fig. 1).

Just as there are multiple etiologies of craniocervical pathologies, there are multiple surgical approaches to treat disorders of this region when patients are symptomatic and

Abbreviations used in this paper: OC = occipitocervical; RA = rheumatoid arthritis; SSEP = somatosensory evoked potential.

This article contains some figures that are displayed in color online but in black-and-white in the print edition.

TABLE 1: Craniocervical junction measurements*

Measure	Description	Abnormal Values
Chamberlain's line ⁶	line drawn from edge of hard palate to opisthion	odontoid process >3 mm above line
Clark's station ⁷	odontoid divided into 3 equal parts in sagittal plane	ant ring of atlas in bottom 2/3 of divisions
McGregor's line ²⁷	line drawn from hard palate to most caudal portion of occipital curve	odontoid process >4.5 mm above line
McRae's line ²⁸	line drawn from basion to opisthion	odontoid process above line
Ranawat's line ³⁶	distance btwn C-2 pedicle & horizontal line of atlas measured	males <15 mm; females <13 mm
Redlund-Johnell criterion ³⁷	line drawn btwn McGregor line & midpoint of C-2 vertebral body	males <34 mm; females <29 mm
Wackenheim clivus baseline ⁴¹	line drawn along pst surface of clivus	odontoid process above line

* ant = anterior; pst = posterior.

warrant surgery. Traditionally a transoral approach to this pathology has been used.^{10,14,29,32,42} Recent improvements in spinal instrumentation technology⁴³ have given spine surgeons other methods for treating craniocervical pathologies. In this paper we present cases illustrating that a posterior-only approach with intraoperative reduction can achieve the desired fusion construct in cranial settling.

Methods

Case 1

History and Examination. A 51-year-old woman with known RA treated with adalimumab presented with chronic neck pain, headache, and left-sided facial pain and numbness. Her physical examination was unremarkable. Magnetic resonance imaging of the brain demonstrated cranial settling with subsequent cervicomedullary kinking (Fig. 2). Further workup with flexion and extension radiographs of the cervical spine revealed instability (Fig. 3). Her radiographic parameters are listed in Table 2, showing measurements consistent with cranial settling.

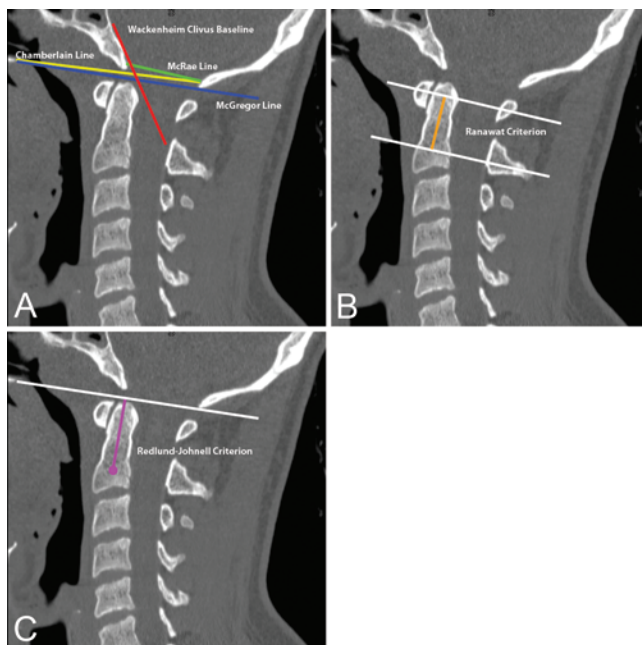


FIG. 1. Normal sagittal cervical spine CTs demonstrating the different radiological measurement lines to assess for atlantoaxial impaction.

Surgical Technique. Preoperatively the patient was admitted and placed in cervical traction with Gardner-Wells tongs with 15 lb of weight applied in neutral distraction for 2 days, while progress was monitored via daily cross-table lateral radiographs. With signs of only mild reduction, the patient was brought to the operating room and underwent fiberoptic endotracheal intubation. Baseline somatosensory evoked potentials (SSEPs) were obtained prior to patient positioning. The patient lay prone on a radiolucent table with her head resting on a foam headrest to allow for reduction maneuvers. The weights were then reattached to the tongs to provide neutral traction.

Following standard exposure, an occipital keel plate was attached, with bicortical screw purchase at multiple fixation points. Bilateral C-2 laminar screws and C3–5 lateral mass screws were placed under fluoroscopic guidance. Rods were contoured to fit the angle between the occipital keel plate and the cervical screw heads without tension. The rods were initially left long at both ends to allow for reduction maneuvers. Screw caps were then provisionally tightened.

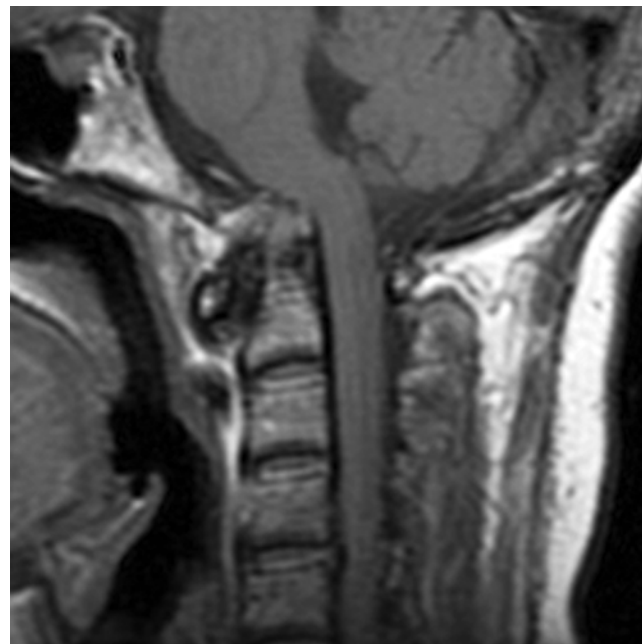


FIG. 2. Case 1. Brain MR image (without Gd) demonstrating cranial settling and kinking of the cervicomedullary junction.

Posterior fusion for craniocervical instability

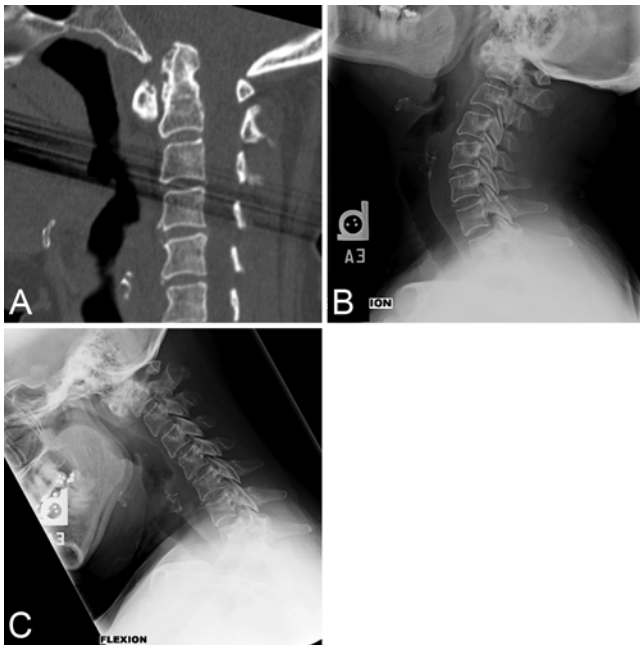


FIG. 3. Case 1. Sagittal cervical spine CT (A) demonstrating the extent of bony elements not previously seen well on MRI findings (Fig. 2). Extension (B) and flexion (C) radiographs showing instability at the C1–2 junction with an increase in distance between the atlas and odontoid process.

At this point, several reduction maneuvers were used to facilitate reduction in essentially two vectors: 1) anterior reduction of C-2 relative to the foramen magnum, and 2) inferior reduction of C-2 relative to the foramen magnum. To facilitate anterior reduction, a rod extender was temporarily placed on the rod posterior to the keel plate (Fig. 4). After loosening the screw caps on the keel plate, compression between the keel plate and the rod extender facilitated anterior reduction of C-2 relative to the foramen magnum (Fig. 5B).

Two reduction maneuvers were available for inferior reduction of C-2 relative to the foramen magnum. Analogous to the above maneuver, a rod extender can be fashioned on the rod caudal to the C-5 lateral mass screw. The screw caps can be loosened cephalad to the rod extender, and compression can be applied between the rod extender and the lateral mass screws (Fig. 5C). Alternatively, a rod extender can be attached above the most cephalad spinal fixation point, and distraction between this point and the lateral mass screws can facilitate the same maneuver (Fig. 5D).

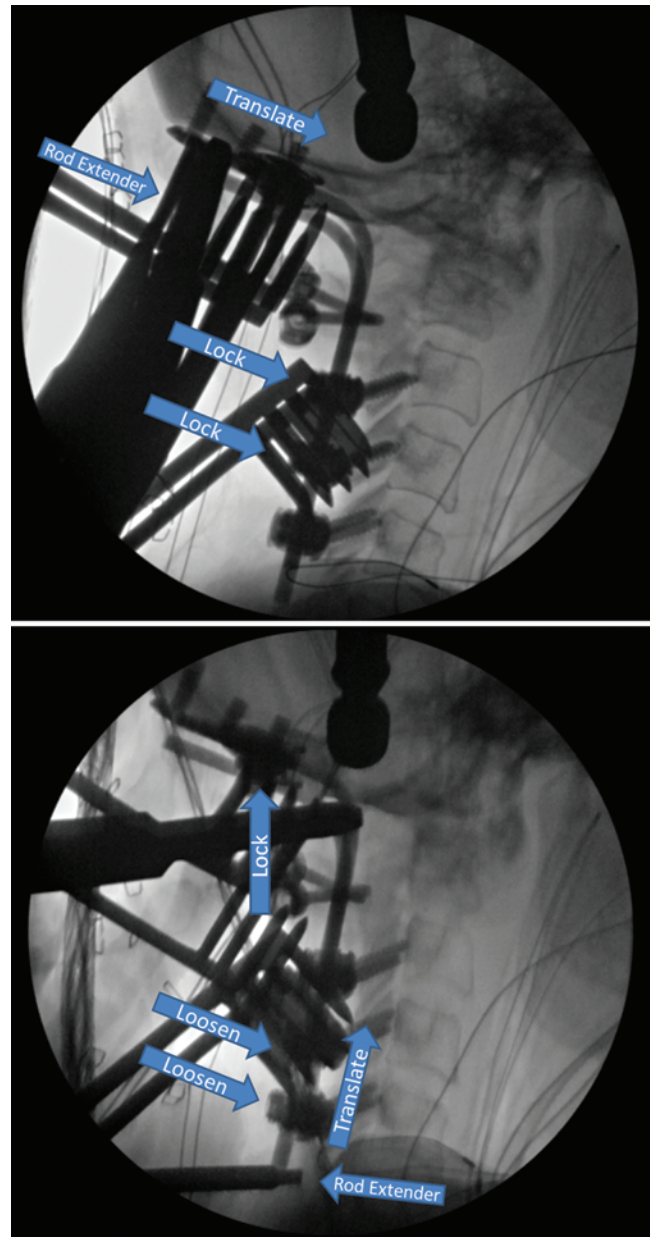


FIG. 4. Case 1. Intraoperative fluoroscopic images showing anterior translation (upper), moving the odontoid process away from the spinal cord, and vertical translation (lower), which in turn pushes the skull/occipital plate away from the cervical spine.

TABLE 2: Preoperative and postoperative radiological results in 3 cases of craniocervical instability

Line	Case 1		Case 2		Case 3	
	Preop	Postop	Preop	Postop	Preop	Postop
Ranawat's (mm)	5.1*	125*	10.8*	132*	8.6*	15.0*
McRae's	above	below	below	below	above	below
McGregor's (mm)	10.6	2.7	7.4	2.2	6.8	3.4
Chamberlain's (mm)	8.4	1.5	4.4	0.6	4.8	1.9

* Indicates measurements for females.

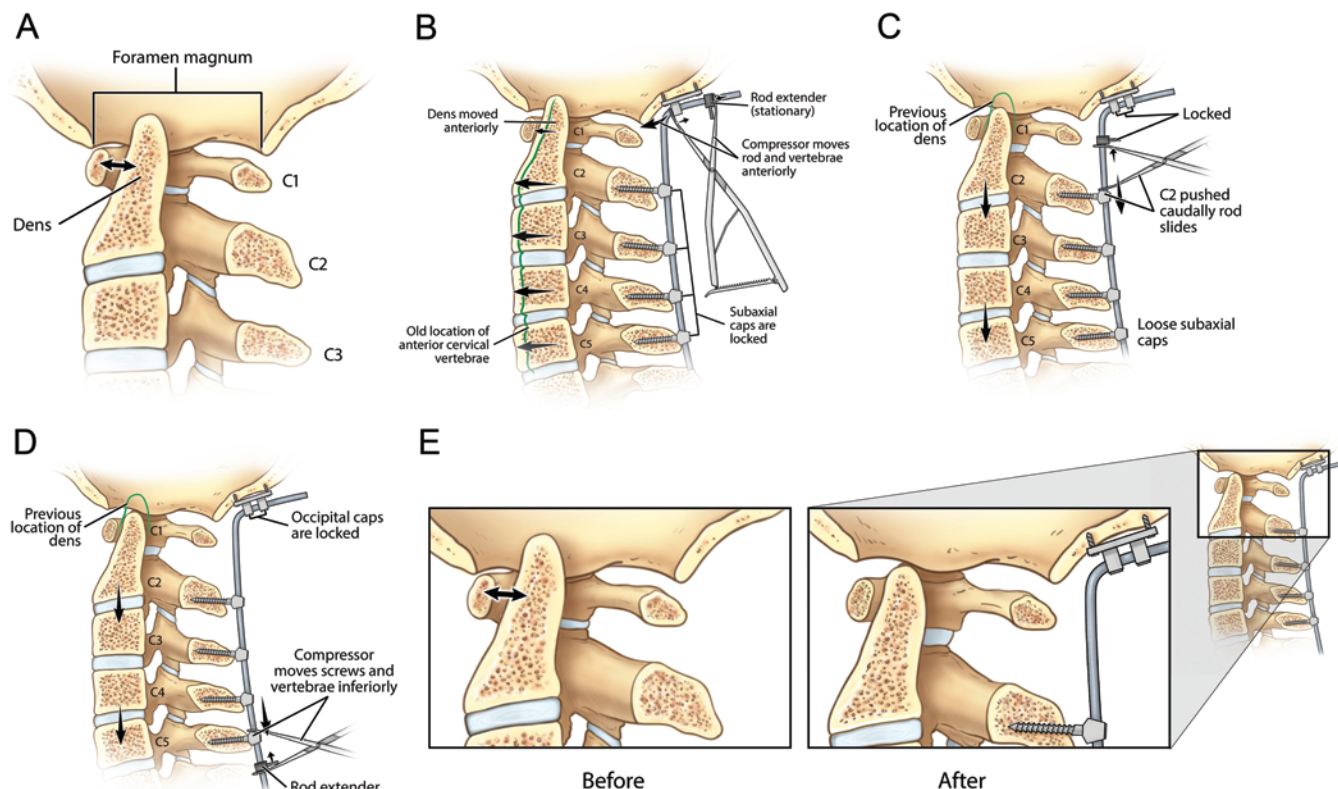


FIG. 5. Case 1. Cranial settling with the dens protruding through the foramen magnum (A). Anterior reduction (B): a rod extender is placed at the end of the occipital plate, and a compressor is used to anteriorly translate the spine toward the anterior ring of C-1. Two methods of inferior reduction can be implemented, either at the caudal end with the compressor (C) or at the cephalad end using a distractor (D). The final results before and after using this surgical technique (E). Copyright Richard Young. Published with permission.

These maneuvers were performed under fluoroscopic guidance while monitoring for any changes in intraoperative SSEPs. Following reduction, final tightening of all hardware, the removal of temporary rod extenders, and trimming of any excess rod previously used for reduction were performed. Bone decortication was performed along with allograft and autograft placement to facilitate fusion. After surgery, the patient was maintained in a rigid cervical collar for immobilization (Fig. 5E).

Postsurgical Course. The patient tolerated the procedure well without any complications, and her symptoms resolved after surgery. Follow-up imaging 8 months after surgery (Fig. 6) showed no hardware complications.

Case 2

A 34-year-old woman with a history of RA and currently taking prednisone and certolizumab pegol, in whom RA had been diagnosed at 20 years of age, presented in a halo brace for a second opinion. Four months earlier at an outside hospital, she had undergone a C1–2 fusion via a sublaminar wiring technique for craniocervical instability. Imaging demonstrated pseudarthrosis, and she became symptomatic with electric shocks and body weakness when putting her head on a pillow, thus prompting treatment with halo bracing. Radiological imaging showed occipitocervical (OC) instability with

minimal correction after halo reduction. Closed reduction was not performed in this case since the sublaminar wires were bowed into the spinal canal and there was atlantoaxial instability.

Surgical Technique. Similar to the prior case, the patient was brought to the operating room, and awake fiberoptic endotracheal intubation was performed. Prior to taking off the halo brace, we put a hard cervical collar in place and obtained baseline SSEP measurements. A Mayfield skull clamp (Integra) was used to attempt closed reduction with the patient under anesthesia. Because there was no need for vertical translation of the C-2 vertebra, the patient underwent surgery in the Mayfield frame. Intraoperative closed reduction with neuromonitoring was attempted to correct the subluxation under fluoroscopy, but it was unsuccessful. The surgery was performed without using the monopolar electrocautery since the sublaminar cables abutted the spinal cord. A laminectomy was performed en bloc to remove the previous hardware without injuring the spinal cord. Somatosensory evoked potentials showed improvement after the decompression.

Manual reduction of C-1 was attempted, but the vertebra did not move. An occipital plate and C-2 pars screws with C-3 lateral mass screws were placed bilaterally, skipping C-1 given an abundance of scar tissue and the absence of a tissue plane to safely identify normal



FIG. 6. Case 1. Preoperative (upper) and postoperative (lower) images obtained at 8 months, showing reduction of the dens with a stable construct.

anatomy. A reduction maneuver was performed after contouring a rod into the screw heads without tension, with the screw caps provisionally tightened (Fig. 7). At this point, a temporary heavy rod holder was placed caudal to the occipital plate and a distractor instrument was placed in-between (Fig. 8). Under fluoroscopy, we saw the action

of the distractor instrument allow for anterior translation of the axis in relation to the atlas (Video 1).

VIDEO 1. Saw-bone model demonstrating the anterior reduction maneuver using a distractor between the occipital plate and rod holder. Copyright Joseph O'Brien. Published with permission. Click here to view with Media Player. Click here to view with Quicktime.

Postsurgical Course. The patient tolerated the procedure well without any complications, and her symptoms resolved after surgery. Follow-up imaging at 1 year after surgery (Fig. 9) showed no hardware complications.

Case 3

History and Examination. A 73-year-old woman with RA presented with progressive worsening of neck pain and frequent falls, which were attributed to balance issues. On physical examination she had limited motion in her cervical spine, and when she looked down she had shooting pain down her neck and back. She had limited use of her hands, was hyperreflexive, and required a walker. Preoperative closed reduction was not performed.

Surgical Technique. The setup and approach for this case were similar to those in Case 2. A longer construct extending from the occiput to C-6 was used given concerns regarding osteoporosis. Lateral mass screws were placed from C-3 to C-6, skipping C-2 since C2-3 was autofused.

Alignment was achieved with a single reduction maneuver. The offset connector/rod extender was placed slightly caudal to the occipital plate, serving two purposes. First, it allowed the distractor instrumentation to have a solid backing and the distractor to use the rod as a "track." Second, it allowed maximal torque to be applied since the vector parallels the force applied by the distractor anteriorly (Fig. 10).

Again, cervical reduction was performed under fluoroscopy, and continuous SSEP monitoring demonstrated no adverse change in signals. Following the instrumentation, a cervical laminectomy was performed, as was decortication and placement of allograft and autograph to aid with fusion.

Postsurgical Course. The patient tolerated the procedures well without any complications. She continues to use her walker for assistance; however, she has reported improvement in the use of her hands. All postoperative radiographic evaluation demonstrated good reduction, with craniocervical measurement parameters all showing reduction into normal ranges (Table 2).

Discussion

The number of surgical cases caused by RA is on the decline^{15,18} as a result of awareness, early treatment, and improved medications. However, spine surgeons still encounter cranial settling due to a rheumatoid process that can be difficult to correct. Progression of this disease in the cervical spine oftentimes results in a large pannus that compresses the cervicomedullary junction, causing multiple symptoms as mentioned above. Matsunaga et al. showed that cervical decompression and fusion in symp-

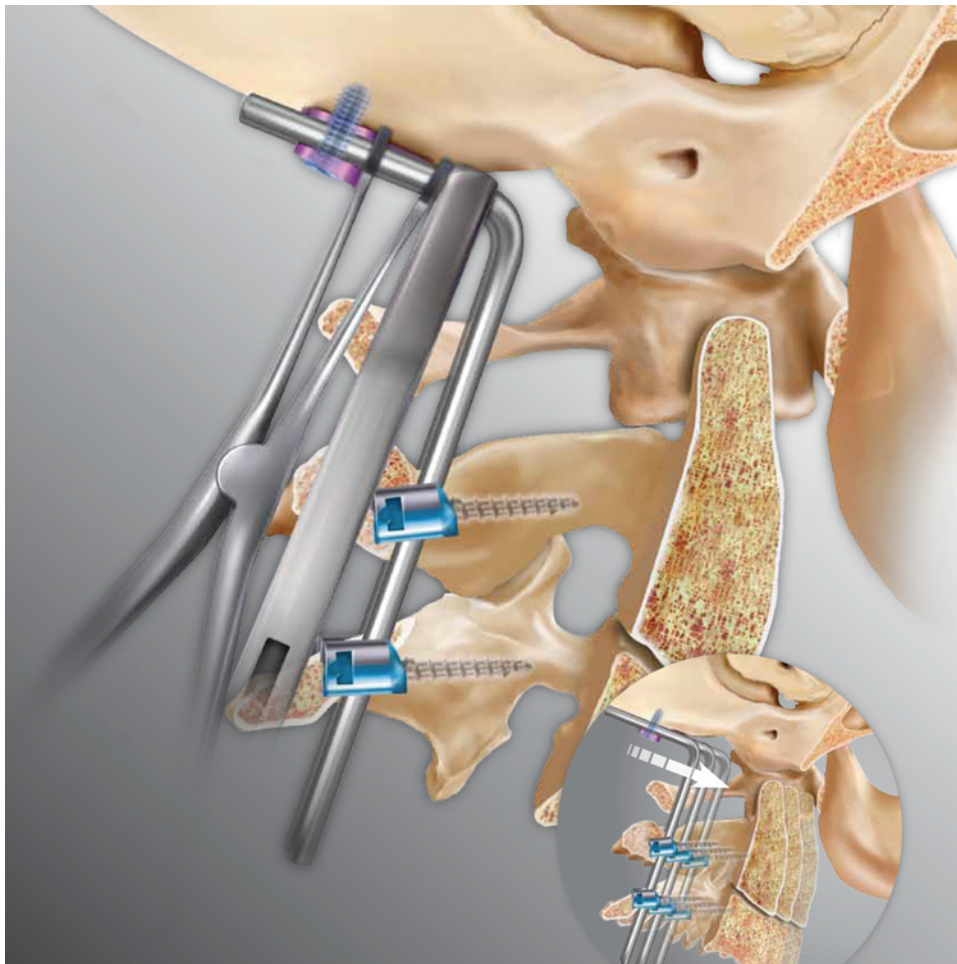


FIG. 7. Case 2. Illustration depicting a distractor between the rod holder and the occipital plate, resulting in anterior translation of the cervical spine relative to the foramen magnum. Copyright Joseph O'Brien. Published with permission.

tomatic patients is necessary.²⁴ At the 3-year follow-up, their entire nonsurgical arm had become bedridden, and by 8 years these same patients had all died, with a mean survival of 4.2 years. On the other hand, the surgical arm not only showed improvement, but also lived for up to 18 years, with a mean survival of 9.7 years. Without a doubt, symptomatic patients with cranial settling require surgical intervention.

The anterior surgical approach has been traditionally applied in treating this pathology and has a very high success rate.^{14,29,35} Hadley and colleagues described a series of 53 patients with basilar invagination and brainstem compression due to RA, and surgical morbidity and mortality in these patients was 6% and 0%, respectively.¹⁴ The morbidities associated with this approach include infection,¹⁴ breathing difficulties requiring a tracheostomy,²⁹ swallowing difficulties,⁴² and CSF fistulas.¹⁴ Furthermore, the instability caused by ligamentous disruption^{14,32} from the anterior approach does require supplemental stabilization from a posterior approach.^{10,25} Other anterior surgical techniques have been explored, such as transoral robotic surgery,²² endoscope-assisted transnasal surgery,¹⁶ and transcervical surgery.^{26,44} Ultimately, the goal of

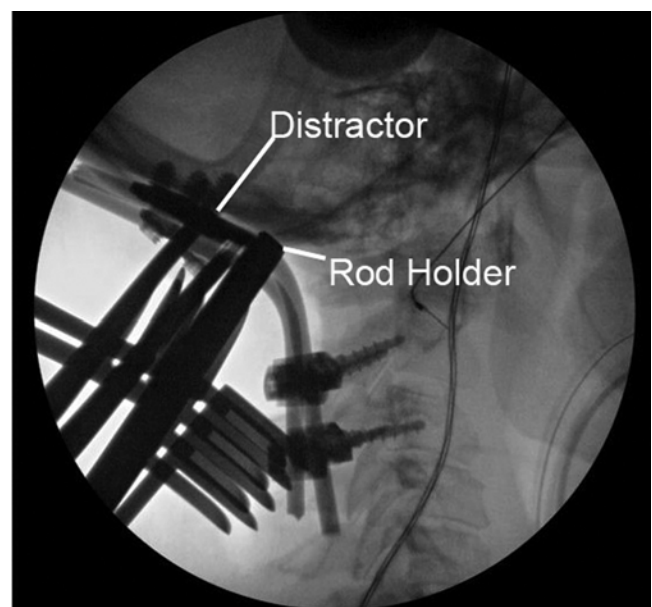


FIG. 8. Case 2. Intraoperative fluoroscopic image replicating the process featured in Fig. 5.

Posterior fusion for craniocervical instability

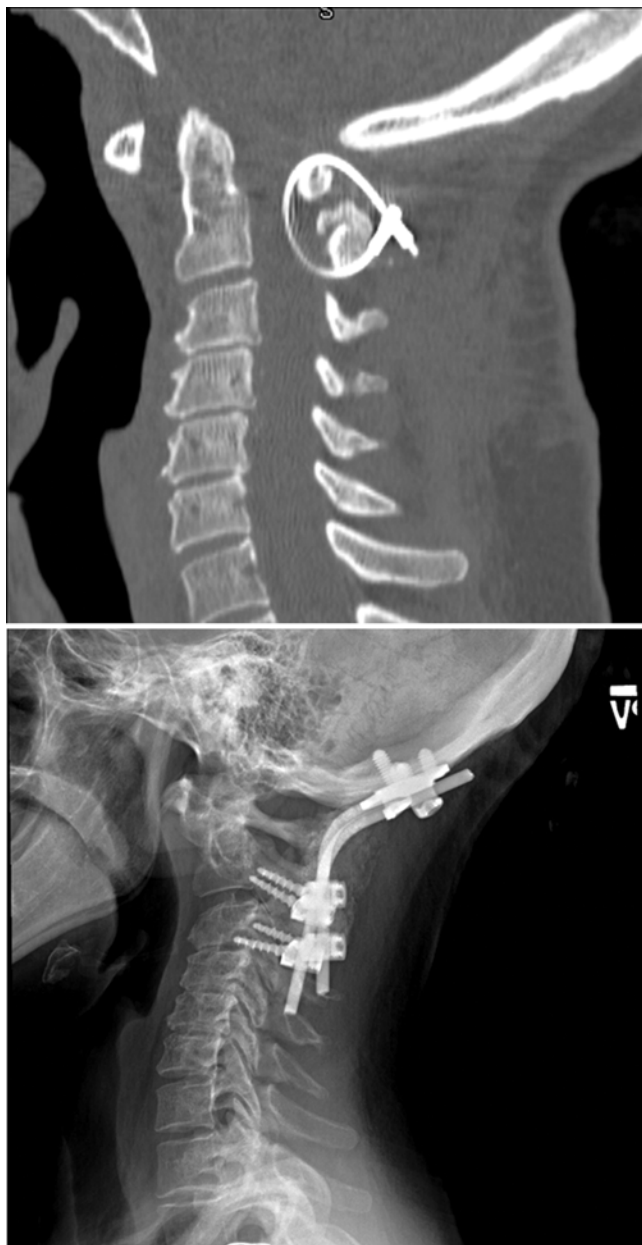


FIG. 9. Case 2. Sagittal CT cervical spine (**upper**) showing preoperative atlantoaxial instability with sublamina wiring. Lateral radiograph (**lower**) showing stable reduction and instrumentation at the 1-year follow-up.

these new methods is to decrease the morbidities associated with the transoral approach.

To avoid the morbidities associated with anterior surgery, solely posterior approaches to treat cranial settling have been explored over the years.^{1,11,17,38} The difficulty lies with indirect decompression of the anterior pathology since the spine has vertically translated into the cranial vault. Reduction techniques via cervical traction, with Gardner-Wells tongs or a halo ring, are safe and have been commonly used to help reduce and realign the spine.^{11,25,38} If closed reduction is successful, patients then undergo posterior fusion to maintain alignment. However, sometimes posterior reduction with cervical traction is

unsuccessful, thus requiring a more focused and persuasive means of achieving normal alignment. Regardless of the methodology, reduction methods rely on relative mobility and the lack of fusion—congenital, autofusion, or iatrogenic. Preoperative CT scanning is crucial when planning intraoperative reduction.

The goals in treating cranial settling from the posterior approach are 1) to decompress the anterior pathology and 2) to create a stable spinal construct to prevent further insult to the spinal cord with neck movements. Cervical traction with the use of Gardner-Wells tongs or halo ring placement has been safe and very effective in achieving the first goal of decompressing the anterior pathology.^{5,30} In some cases, cervical traction has been used presurgically for up to 30 days^{30,34} before posterior fixation.^{34,40} Often, patient symptoms resolve with traction alone prior to surgery;^{12,13,20,25} in fact, traction alone without surgery has been successful.²⁰ In our experience, preoperative traction is most useful in cases with severe kyphosis, to facilitate surgical approaches. In particular, we have used it successfully in cases of severe chin-on-chest deformity.

The pathology that causes cranial settling is important to differentiate from basilar invagination. Goel et al.¹³ noted that basilar invagination due to congenital phenomena was much harder to reduce with preoperative traction than cranial settling from acquired conditions such as RA. Many patients with basilar invagination in that series did not have reduction of the malalignment in preoperative traction. The rheumatoid disease process causing cranial settling results from degeneration of the ligaments and joints and eventually causes instability of the craniocervical junction. Generally, rheumatoid patients have a quasi-stable condition once cranial settling has occurred. The relative stability is mostly attributed to docking of the skull base on the spine, but vertical vectors will generally undock the skull from its position of immobility.

The second goal—having a stable posterior spinal construct—is relatively easy to achieve with our current technology in spinal hardware. Compared with prior wiring techniques, placement of current screw and rod constructs has proven to be the superior technique in spinal fixation.^{21,37}

In the treatment of anterior cervical pathology, there are a limited number of cases involving the posterior-only approach. Distraction between the occipital plate and C-2 pedicle screws has been described.¹⁹ Additionally, others have described distraction between C-1 lateral mass screws and C-2 pedicle or pars screws, with placement of a spacer between the C1–2 articular space after distracting C-2 caudally away from C-1.^{1,2,12,21} Hsu et al. described a technique similar to ours; however, their two cases involved the treatment of craniocervical instability caused by a retropharyngeal abscess and bony destruction from a breast metastasis.¹⁷

Rigid OC fusion constructs are not without risk. Screw pullout and subdural hematomas in the cerebellum from drilling the occipital bone are possible complications.⁴⁰ To avoid screw pullout, long C-2 pars screws or C1–2 transarticular screws in addition to longer fusion constructs are options. Understanding the anatomy is crucial in placing the occipital plate in order to decrease the risks of subdural

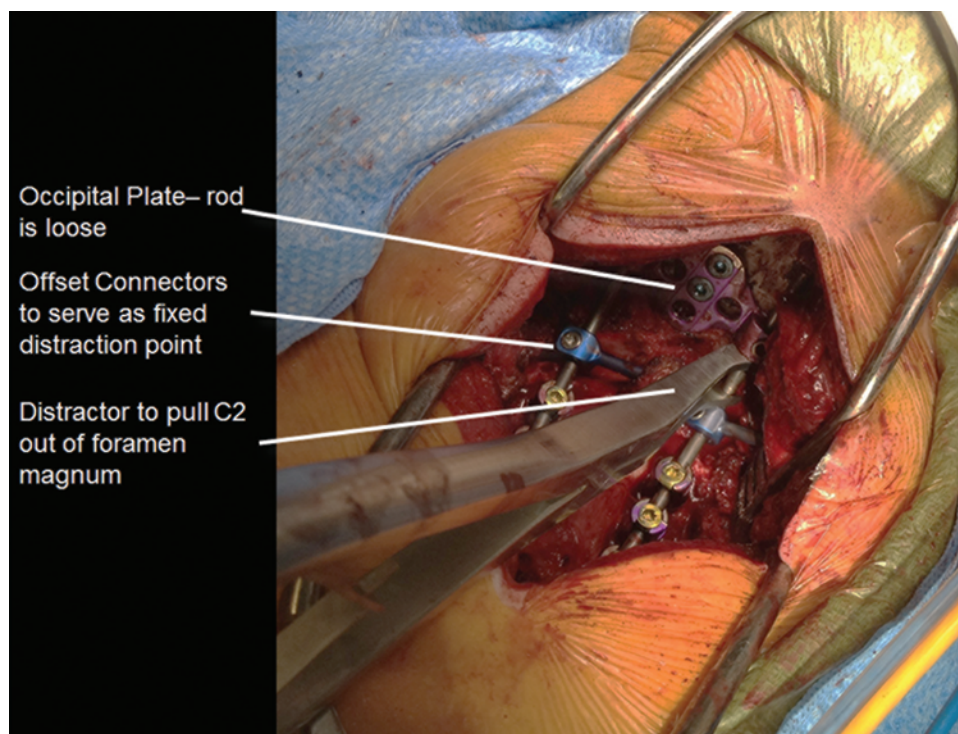


FIG. 10. Case 3. Surgeon's view of offset connectors used in lieu of a rod holder.

hematoma caused by screw insertions. The occipital plate screw is optimally placed at the keel and at the occipital protuberance where screw lengths up to 16 mm can be placed.³³ It is important to pay special attention when drilling lateral to the keel since the bone is only 3–6 mm thick.

Other complications associated with OC fusion include rod breakage, fusion failure due to disease progression from underlying pathology,⁴ poor bone quality due to age and medications (for example, chronic steroid use), pseudarthrosis, or vertebral artery injury from cervical screw placement. We assume that this patient population would have poor bone quality; thus it is beneficial to extend the spinal construct to use several fixation points to distribute the forces of movement and stabilization across multiple levels. Additionally, vertical reduction maneuvers do not provide pullout forces on the screws, and neither does anterior translation on C-2 provide pullout forces, but instead provides compressive loads. Ultimately, the surgeon would decide intraoperatively which maneuver to use on a case-by-case basis.

Careful patient selection is needed when dealing with cranial settling from RA. A bone density scan may be helpful in determining if a patient is severely osteoporotic, which could lead to an increased screw-pullout risk and instrumentation failure, thus warranting a longer OC construct. The postoperative use of external bracing and bone-growth stimulator may help with the fusion, as could nutritional supplementation and/or counseling.

Conclusions

Occipitocervical junction pathology can be difficult to manage, and there are many surgical options. We dem-

onstrated that an intraoperative reduction technique was immediate and did not require prolonged bed rest while in external cervical traction. With the posterior-only approach, we accomplished indirect decompression of the spinal cord, provided a stable rigid fusion construct, and circumvented the morbidities associated with an anterior approach for nonfused cases of cranial settling.

Acknowledgment

We acknowledge Michelle Feinberg for assisting in the proofing of the manuscript.

Disclosure

The authors report no conflict of interest concerning the materials or methods used in this study or the findings specified in this paper. Joseph O'Brien is a paid consultant for Relivant, Globus Medical, NuVasive Inc., and Stryker; has received royalties from Globus Medical; has ownership of Spinicity; and has received clinical or research support from Globus Medical for the study described.

Author contributions to the study and manuscript preparation include the following. Conception and design: Young. Acquisition of data: Young, Sherman, O'Brien. Analysis and interpretation of data: Young, Wind, O'Brien. Drafting the article: Young, Wind. Critically revising the article: Young, Wind, O'Brien. Reviewed submitted version of manuscript: Young, Wind. Approved the final version of the manuscript on behalf of all authors: Young. Administrative/technical/material support: O'Brien. Study supervision: Litvack, O'Brien.

References

1. Ames CP, Acosta F, Nottmeier E: Novel treatment of basilar invagination resulting from an untreated C-1 fracture associated with transverse ligament avulsion. Case report and de-

Posterior fusion for craniocervical instability

- scription of surgical technique. **J Neurosurg Spine** 2:83–87, 2005
2. Aryan HE, Newman CB, Nottmeier EW, Acosta FL Jr, Wang VY, Ames CP: Stabilization of the atlantoaxial complex via C-1 lateral mass and C-2 pedicle screw fixation in a multicenter clinical experience in 102 patients: modification of the Harms and Goel techniques. **J Neurosurg Spine** 8:222–229, 2008
3. Benke M, Yu WD, Peden SC, O'Brien JR: Occipitocervical junction: imaging, pathology, instrumentation. **Am J Orthop** 40:E205–E215, 2011
4. Bhatia R, Desouza RM, Bull J, Casey AT: Rigid occipitocervical fixation: indications, outcomes, and complications in the modern era. Clinical article. **J Neurosurg Spine** 18:333–339, 2013
5. Botelho RV, Neto EB, Patriota GC, Daniel JW, Dumont PA, Rotta JM: Basilar invagination: craniocervical instability treated with cervical traction and occipitocervical fixation. Case report. **J Neurosurg Spine** 7:444–449, 2007
6. Chamberlain WE: Basilar impression (platybasia): a bizarre developmental anomaly of the occipital bone and upper cervical spine with striking and misleading neurologic manifestations. **Yale J Biol Med** 11:487–496, 1939
7. Clark CR, Goetz DD, Menezes AH: Arthrodesis of the cervical spine in rheumatoid arthritis. **J Bone Joint Surg Am** 71:381–392, 1989
8. Di Lorenzo N, Fortuna A, Guidetti B: Craniovertebral junction malformations. Clinicoradiological findings, long-term results, and surgical indications in 63 cases. **J Neurosurg** 57:603–608, 1982
9. Dickinson LD, Papadopoulos SM, Hoff JT: Neurogenic hypertension related to basilar impression. Case report. **J Neurosurg** 79:924–928, 1993
10. Dickman CA, Locantore J, Fessler RG: The influence of transoral odontoid resection on stability of the craniovertebral junction. **J Neurosurg** 77:525–530, 1992
11. Dickman CA, Sonntag VKH: Surgical management of atlantoaxial nonunions. **J Neurosurg** 83:248–253, 1995
12. Goel A: Treatment of basilar invagination by atlantoaxial joint distraction and direct lateral mass fixation. **J Neurosurg Spine** 1:281–286, 2004
13. Goel A, Bhatjiwale M, Desai K: Basilar invagination: a study based on 190 surgically treated patients. **J Neurosurg** 88:962–968, 1998
14. Hadley MN, Spetzler RF, Sonntag VKH: The transoral approach to the superior cervical spine. A review of 53 cases of extradural cervicomedullary compression. **J Neurosurg** 71:16–23, 1989
15. Hallert E, Husberg M, Bernfort L: The incidence of permanent work disability in patients with rheumatoid arthritis in Sweden 1990–2010: before and after introduction of biologic agents. **Rheumatology (Oxford)** 51:338–346, 2012
16. Hansen MA, da Cruz MJ, Owler BK: Endoscopic transnasal decompression for management of basilar invagination in osteogenesis imperfecta. Technical note. **J Neurosurg Spine** 9:354–357, 2008
17. Hsu W, Zaidi HA, Suk I, Gokaslan ZL, Wolinsky JP: A new technique for intraoperative reduction of occipitocervical instability. **Neurosurgery** 66 (6 Suppl Operative):319–324, 2010
18. Jämsen E, Virta LJ, Hakala M, Kauppi MJ, Malmivaara A, Lehto MU: The decline in joint replacement surgery in rheumatoid arthritis is associated with a concomitant increase in the intensity of anti-rheumatic therapy: a nationwide register-based study from 1995 through 2010. **Acta Orthop** 84:331–337, 2013
19. Jian FZ, Chen Z, Wrede KH, Samii M, Ling F: Direct posterior reduction and fixation for the treatment of basilar invagination with atlantoaxial dislocation. **Neurosurgery** 66:678–687, 2010
20. Joseph V, Rajshekhar V: Resolution of syringomyelia and basilar invagination after traction. Case illustration. **J Neurosurg** 98 (3 Suppl):298, 2003
21. Kim IS, Hong JT, Sung JH, Byun JH: Vertical reduction using atlantoaxial facet spacer in basilar invagination with atlantoaxial instability. **J Korean Neurosurg Soc** 50:528–531, 2011
22. Lee JY, O'Malley BW, Newman JG, Weinstein GS, Lega B, Diaz J, et al: Transoral robotic surgery of craniocervical junction and atlantoaxial spine: a cadaveric study. Laboratory investigation. **J Neurosurg Spine** 12:13–18, 2010
23. Maeda T, Saito T, Harimaya K, Shuto T, Iwamoto Y: Atlantoaxial instability in neck retraction and protrusion positions in patients with rheumatoid arthritis. **Spine (Phila Pa 1976)** 29:757–762, 2004
24. Matsunaga S, Sakou T, Onishi T, Hayashi K, Taketomi E, Sunahara N, et al: Prognosis of patients with upper cervical lesions caused by rheumatoid arthritis: comparison of occipitocervical fusion between C1 laminectomy and nonsurgical management. **Spine (Phila Pa 1976)** 28:1581–1587, 2003
25. McAfee PC, Cassidy JR, Davis RF, North RB, Ducker TB: Fusion of the occiput to the upper cervical spine. A review of 37 cases. **Spine (Phila Pa 1976)** 16 (10 Suppl):S490–S494, 1991
26. McGirt MJ, Attenello FJ, Sciubba DM, Gokaslan ZL, Wolinsky JP: Endoscopic transcervical odontoidectomy for pediatric basilar invagination and cranial settling. Report of 4 cases. **J Neurosurg Pediatr** 1:337–342, 2008
27. McGregor M: The significance of certain measurements of the skull in the diagnosis of basilar impression. **Br J Radiol** 21:171–181, 1948
28. McRae DL, Barnum AS: Occipitalization of the atlas. **Am J Roentgenol Radium Ther Nucl Med** 70:23–46, 1953
29. Menezes AH, VanGilder JC: Transoral-transpharyngeal approach to the anterior craniocervical junction. Ten-year experience with 72 patients. **J Neurosurg** 69:895–903, 1988
30. Menezes AH, VanGilder JC, Clark CR, el-Khoury G: Odontoid upward migration in rheumatoid arthritis. An analysis of 45 patients with “cranial settling.” **J Neurosurg** 63:500–509, 1985
31. Milhorat TH, Bolognese PA, Nishikawa M, McDonnell NB, Francomano CA: Syndrome of occipitoatlantoaxial hypermobility, cranial settling, and Chiari malformation Type I in patients with hereditary disorders of connective tissue. **J Neurosurg Spine** 7:601–609, 2007
32. Naderi S, Crawford NR, Melton MS, Sonntag VKH, Dickman CA: Biomechanical analysis of cranial settling after transoral odontoidectomy. **Neurosurg Focus** 6(6):E7, 1999
33. Nockels RP, Shaffrey CI, Kanter AS, Azeem S, York JE: Occipitocervical fusion with rigid internal fixation: long-term follow-up data in 69 patients. **J Neurosurg Spine** 7:117–123, 2007
34. Peng X, Chen L, Wan Y, Zou X: Treatment of primary basilar invagination by cervical traction and posterior instrumented reduction together with occipitocervical fusion. **Spine (Phila Pa 1976)** 36:1528–1531, 2011
35. Quinones-Hinojosa A: **Schmidke and Sweet: Operative Neurosurgical Techniques: Indications, Methods and Results**, ed 6. Philadelphia: Elsevier Health Sciences, 2012
36. Ranawat CS, O'Leary P, Pellicci P, Tsairis P, Marchisello P, Dorr L: Cervical spine fusion in rheumatoid arthritis. **J Bone Joint Surg Am** 61:1003–1010, 1979
37. Redlund-Johnell I, Pettersson H: Radiographic measurements of the cranio-vertebral region. Designed for evaluation of abnormalities in rheumatoid arthritis. **Acta Radiol Diagn (Stockh)** 25:23–28, 1984
38. Sasso RC, Jeanneret B, Fischer K, Magerl F: Occipitocervical fusion with posterior plate and screw instrumentation. A long-term follow-up study. **Spine (Phila Pa 1976)** 19:2364–2368, 1994

39. Taggard DA, Menezes AH, Ryken TC: Instability of the craniovertebral junction and treatment outcomes in patients with Down's syndrome. **Neurosurg Focus** 6(6):E3, 1999
40. Vale FL, Oliver M, Cahill DW: Rigid occipitocervical fusion. **J Neurosurg** 91 (2 Suppl):144–150, 1999
41. Wackenheim A: **Roentgen Diagnosis of the Cranio-Vertebral Region**. New York: Springer, 1974
42. Wang C, Yan M, Zhou HT, Wang SL, Dang GT: Open reduction of irreducible atlantoaxial dislocation by transoral anterior atlantoaxial release and posterior internal fixation. **Spine (Phila Pa 1976)** 31:E306–E313, 2006
43. Winegar CD, Lawrence JP, Friel BC, Fernandez C, Hong J, Maltenfort M, et al: A systematic review of occipital cervical fusion: techniques and outcomes. A review. **J Neurosurg Spine** 13:5–16, 2010
44. Wolinsky JP, Sciubba DM, Suk I, Gokaslan ZL: Endoscopic image-guided odontoidectomy for decompression of basilar

invagination via a standard anterior cervical approach. Technical note. **J Neurosurg Spine** 6:184–191, 2007

Manuscript submitted July 22, 2013.

Accepted March 19, 2014.

Please include this information when citing this paper: published online May 2, 2014; DOI: 10.3171/2014.3.SPINE13684.

Supplemental online information:

Video 1: http://mfile.akamai.com/21490/wmv/digitalwbc.download.akamai.com/21492/wm.digitalsource-na-regional/spine13-684_video_1.asx (Media Player).

http://mfile.akamai.com/21488/mov/digitalwbc.download.akamai.com/21492/qt.digitalsource-global/spine13-684_video_1.mov (Quicktime).

Address correspondence to: Richard M. Young, M.D., 2150 Pennsylvania Ave., NW, Ste. 7-420, Washington, DC 20037. email: rmyoung@gwu.edu.